

Please feel free to contact us about any problems you have at work or in the workplace

Working in a country with different lifestyles can cause many problems. Please contact us immediately if you are struggling with the following contents.

Cases of consultations for foreign workers

- Check!** **01** Pay cuts, Low wages, No-payment of wages
- Check!** **02** Retirement, Layoff, Labor contract.
- Check!** **03** Harsh and poor working environment, Long working hours
- Check!** **04** Workplace harassment, Bullying, Harassment
- Check!** **05** Communication disorders, Friction with the community

Point!

- A salary reduction due to a one-sided decision of the company may be against the law and invalid.
- The minimum wage is determined by each prefecture. This system stipulates the minimum amount of wages that employers must pay to their workers.
- Failure to pay wages stipulated in labor contracts and work regulations on the prescribed payment date is a violation of the law.
- Failure to pay wages stipulated in labor contracts and work regulations on the prescribed payment date is a violation of the law.
- Long working hours refer to the time worked in excess of the statutory working hours of 8 hours a day and 40 hours per week (overtime work).
- Harassment is a word that translates as "harassment" or "bullying." Both are harassment. This is because their words and actions cause disadvantage or discomfort to others.
- Please contact us if you are having trouble with language barriers (nuances are not understood, etc.), cultural barriers (problems caused by differences in values and cultures, etc.), barriers of expression of intent (differences in expressing intentions between Japanese and foreigners, warmth, etc.).



There is also the consultation desk for employment issues operated by the government.

Administrative Consultation Services

Working Condition Consultation Hot Line
 ※The Ministry of Health, Labor and Welfare (Fukushima Labor bureau)
 "Working Conditions Consultation Hot Line" is a telephone consultation service. The counselors with specialized knowledge provide consultation based on laws and court precedents and introduce related organizations regarding issues related to labor standards-related laws and regulations, such as health impairment due to illegal overtime work and overwork, and unpaid overtime.
 Languages: English, Chinese, Portuguese, other10 languages
 Contents: Advice related to working conditions and laws and regulations
 Phone: 0 1 2 0-8 1 1-6 1 0
 Details of available languages and time → → → → → Hotline web site



Foreign-Language Human Rights Hotline ※Ministry of Justice (Fukushima District Legal Affairs Bureau)
 In order to respond to human rights consultations from people who cannot speak Japanese freely, we have set up a dedicated consultation telephone (Navi Dial). You can receive human rights consultations by calling this phone number from anywhere in Japan.
 Languages: English, Chinese, other14 languages
 Contents: Human rights counseling services
 Phone: 0 5 7 0-0 9 0-9 1 1
 Details of available languages and time → → → → → Human rights hotline web site



For foreigners working in Fukushima Prefecture



Do you have any problems at work like these?

CHECK

•Less than usual salary
•Job description different from the contract

CHECK

•They don't understand what I mean
•I can't talk to anyone

CHECK

I don't know how to apply for residence, how to renew my visa, insurance procedures etc.

CHECK

•No days off
•Why should I do like this?

NPO Fukushima Employment Support Center

Fukushima Employment Support Center provides the following support programs and courses to foreigners working in Japan.

- Employment Support Business**
- Activities to expand work and hobbies by learning computer operation and technology
 - Activities aimed at improving employment problems such as career counseling and harassment
 - Holding seminars and courses related to employment
 - Employment support for foreigners working in Japan Community
- Activity Projects**
- Free learning classes for elementary and junior high school students (Study☆Center)
 - Holding exchange meetings between the elderly, young people, and local residents
 - IT literacy activities for children, the elderly, and people with disabilities, such as PCs and tablets

Address : :960-0116
 2-4 Miyashiro aza Houdenmae
 Fukushima City, Fukushima Prefecture
 Monday to Saturday 10:00am to 7:00 pm
 (We are closed on Sunday, National Holidays)
 Phone : :070-4419-8412
 E-mail address: info@npo-fssc.org



新型コロナウイルス感染症下における
 外国にルーツがある人々への支援活動応援助成

JOB EMERGENCY MAP is a Red Feather
 Community Chest fundraising subsidy project

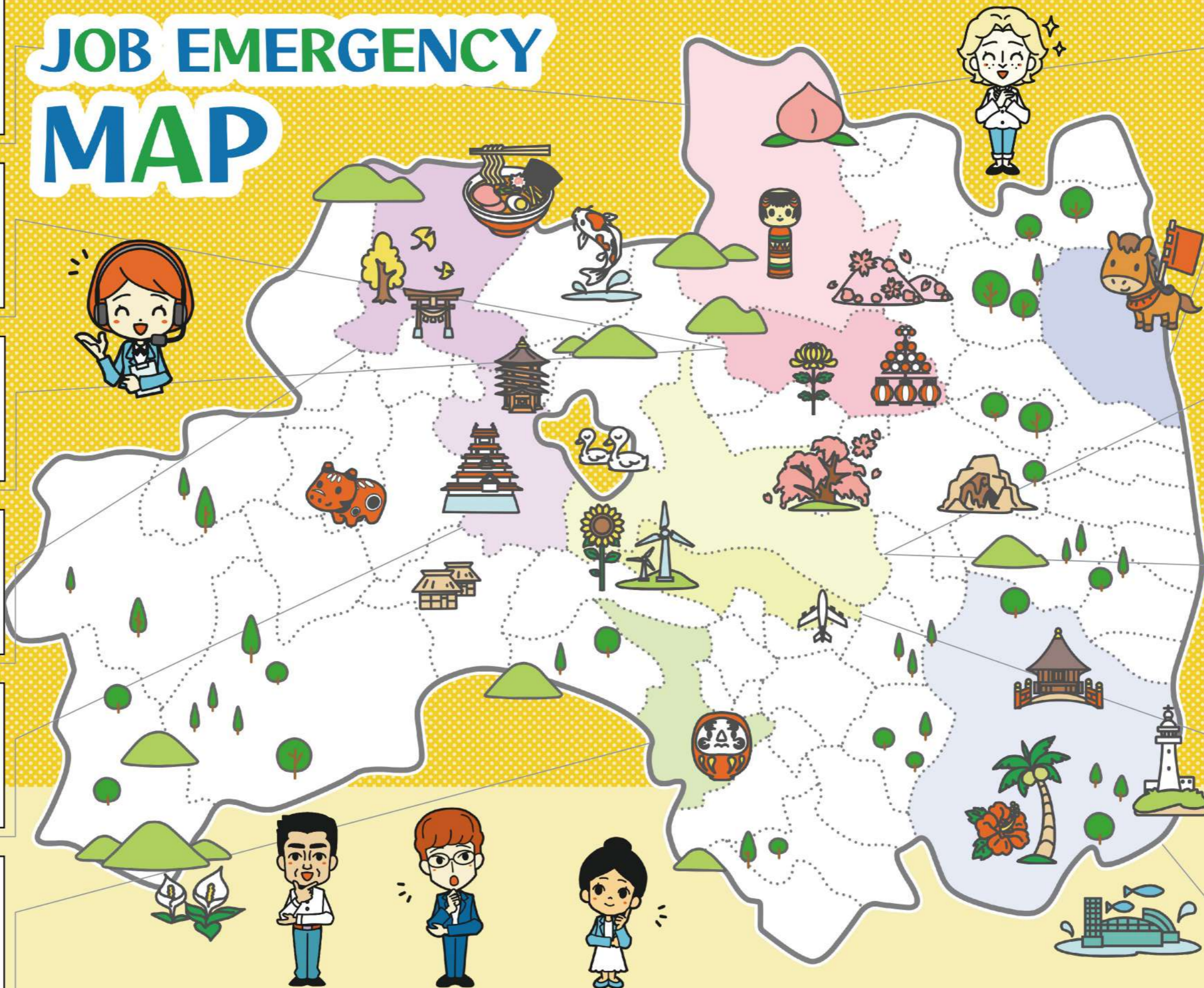


Employment support page for foreigners



English version

JOB EMERGENCY MAP



Organization: Fukushima City International Exchange Association
(office: Intercity Exchange Section)
Supported•lang: Japanese, English, Vietnamese, and other languages are available by a translation device
Contents: Daily life matters, International exchange, Other consultations
Address: 3-1 Gorouchi-cho, Fukushima City (Fukushima City Hall, 1F)
Contact: 024-525-3739

Organization: Minamisoma City Multicultural Center SAKURA
Supported•lang: Japanese, English, and other languages are available by a translation device
Contents: Communication, Japanese class, Daily life matters
Address: 2-35 Asahi-cho, Haramachi-ku, Minamisoma City
Contact: 0244-26-5850

Organization: Koriyama City International Exchange Association
Supported•lang: English, other languages are available using three-way conversation or translation device
Contents: Daily life matters, Information Service, Japanese language course
Address: 1-23-7 Asahi, Koriyama City
Contact: 024-924-2970 (City Hall head office 2F, International- Salon)
Email: intl-salon@city.koriyama.lg.jp

Organization: Fukushimaken Zaijyu Gaikokujin Sogo Shien Network
Supported•lang: Japanese, English, Korean
※ An appointment is required in Vietnamese, Thai, Chinese
Contents: Advice on immigration procedures, Daily life matters Consultation on employment relations
Contact: 024-934-3785
Email: endou.hirosi@taupe.plala.or.jp

Organization: Sukagawa Tabunka Kyosei Netto
Supported•lang: Japanese
Contents: International exchange, Japanese class
Address: 40 Maruta-machi Sukagawa City
Contact: 090-3981-8981
Email: sukagawa.odera@gmail.com

Organization: Iwaki International Association
Supported•lang: Japanese, English, Chinese, Korean, Vietnamese
Contents: Japanese language Support, International exchange, Daily life matters and others
Email: info@iia-fukushima.or.jp
Homepage: http://www.fukushima.or.jp

Organization: Tomodachi Kawan Community
Supported•lang: Japanese, Malay, English
Contents: Consultation on questions and worries of work, International exchange
Email: tomodachi.kawan.c@gmail.com

Organization: Nihonmatsu Chikyū Shiminno Kai
(Nihonmatsu City Hall, Secretarial Policy Devision)
Supported•lang: Japanese
Contents: Daily life matters, International exchange
Contact: 0243-55-5090 (direct number)
Email: sougouseisaku@city.nihonmatsu.lg.jp

Organization: Nihonmatsu Kokusaikoryu Volunteer "Zakuzaku Netto"
Supported•lang: Easy Japanese, Easy English
Contents: Japanese Class (Cosultation)
Place: Nihonmatsu Fukushi Center
(1-5-1 Kameya Nihonmatsu City)
Email: kiku818.ai@gmail.com

Organization: Aizu Kitakata International Association
Supported•lang: Japanese, English, Chinese
Contents: Japanese class, Japanese culture, Daily life matters
Contact: 0241-24-3131
Email: mailakia@seagreen.ocn.ne.jp

Organization: Aizu Wakamatsu International Association
Supported•lang: Japanese, English, Chinese
Contents: Japanese class, Japanese culture, Daily life matters
Contact: 0242-27-3703
Email: mail@awia.jp

Organization: Shirakawa City International Association
(Shirakawa City Hall Planning Policy Division)
Supported•lang: Japanese
Contents: Daily life matters, Japanese class, International exchange
Address: 7-1 Hachimankoji, Shirakawa City
Contact: 0248-22-1111 (division2332)

※Please consult with an organization or facility near your residence about your problems